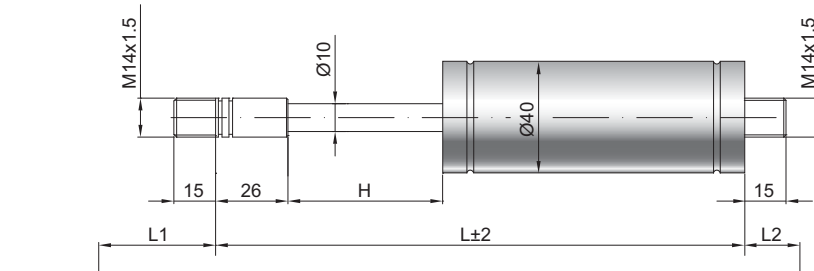


Gaszugfeder Z 10-40 V2

Zugkraft F1	200 - 2000 Newton
Progression	40 %
Kolbenstange	Ø 10 mm, W. 1.4305 / AISI 303
Druckrohr	Ø 40 mm, W. 1.4301 / AISI 304
Anschlüsse	W. 1.4305 / AISI 303

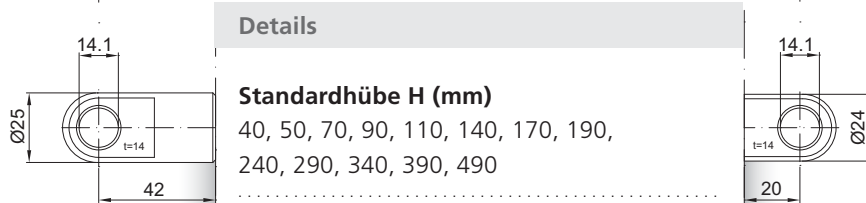
GZ 15

GZ 15



AU 42

AZ 20



Details

Standardhöhe H (mm)
40, 50, 70, 90, 110, 140, 170, 190,
240, 290, 340, 390, 490

Standardlänge GL
 $L = 2 \times H + 150$
 $GL = L + L1 + L2$

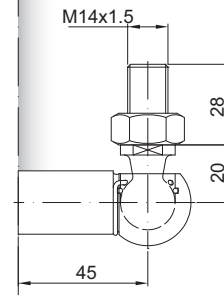
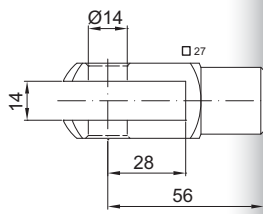
Standardlieferumfang
Ventil an der Kolbenstange

Extras
4 - Fettkammer
6 - Schutzrohr
B3 - Dichtsystem
NT - Niedertemperaturlösung
HT - Hochtemperaturlösung

Nur am Zylinder möglich

GA 56

WG 45



AG 57

