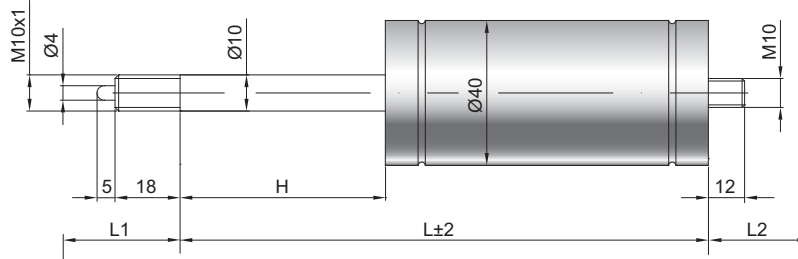


Federnd blockierbare Gasdruckfeder F 10-40 V2

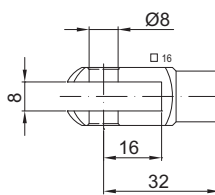
Ausschubkraft F1	250 - 1200 Newton
Progression	15 %
Kolbenstange	Ø 10 mm, W. 1.4305 / AISI 303
Druckrohr	Ø 40 mm, W. 1.4301 / AISI 304
Anschlüsse	W. 1.4305 / AISI 303

GZ 18



GZ 12

GX 32



Details

Standardhöhe H (mm)

10, 15, 20, 25, 30, 40, 50, 55, 60, 70,
80, 90, 100, 110, 120, 125, 130, 140,
150, 155, 170, 190, 200, 210, 220, 230,
290, 340, 390, 440, 490

Standardlänge GL

$$L = 2 \times H + 90$$

$$GL = L + L1 + L2$$

Auslösung

Auslösestift 5 mm überstehend
Auslöseweg 2 - 4 mm

Technische Vorschrift beachten ▾

Standardlieferumfang

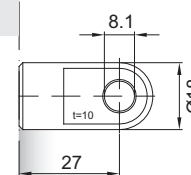
Ventil am Bodenstück

Extras

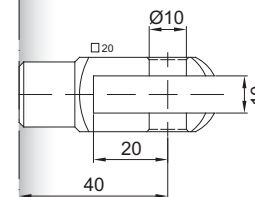
- 3 - Kolbenstangenabdichtung
- 4 - Fettkammer
- 6 - Schutzrohr

Weitere **Anschlüsse** finden Sie hier ▾

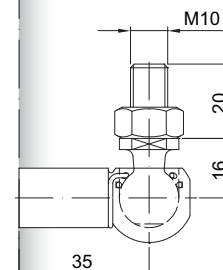
Passende **Beschläge** finden Sie hier ▾



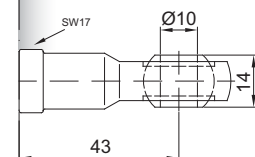
AU 27



GA 40



WG 35



AG 43



Auslösesysteme
finden Sie hier ▾