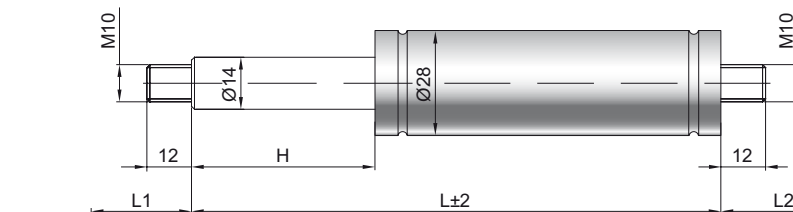


## Gas spring G 14-28 V4

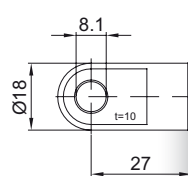
<b>Extension force F1</b>	200 - 2500 Newton
<b>Progression</b>	40 %
<b>Piston rod</b>	Ø 14 mm, W. 1.4404 / AISI 316 L
<b>Cylinder</b>	Ø 28 mm, W. 1.4571 / AISI 316 Ti
<b>Threads</b>	W. 1.4404 / AISI 316 L

GZ 12

GZ 12



AU 27



### Details

#### Standard strokes H (mm)

50, 100, 150, 200, 250, 300, 350, 400, 500

#### Standard length GL

$$L = 2 \times H + 107$$

$$GL = L + L1 + L2$$

#### Standard including

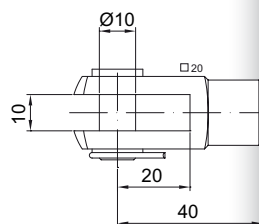
Valve in base plate, Wiper ring, Grease chamber

#### Extras

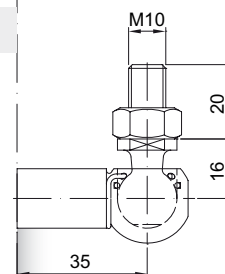
- 2 - Radial valve
- 6 - Protection tube
- 7 - Floating piston
- 8 - Locking device
- B3 - Sealing system
- NT - Low-temperature design
- HT - High-temperature design
- RK - Friction element

More **threads** can be found here [▶](#)

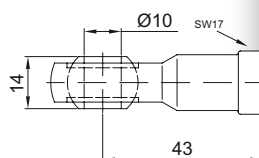
GG 40



WG 35



AG 43



QV GZ

