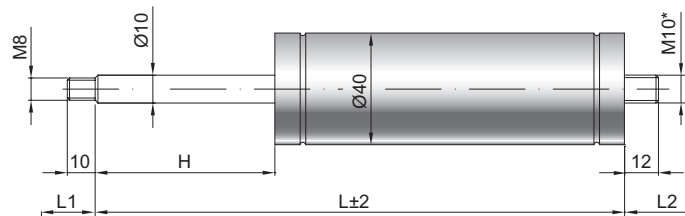


Gas spring G 10-40 V4

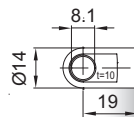
Extension force F1	150 - 1200 Newton
Progression	8 %
Piston rod	Ø 10 mm, W. 1.4404 / AISI 316 L
Cylinder	Ø 40 mm, W. 1.4571 / AISI 316 Ti
Endfittings	W. 1.4404 / AISI 316 L

GZ 12

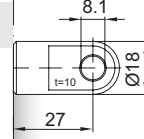


GZ 12

AU 19



Details

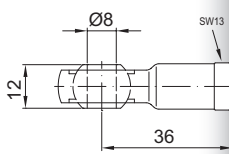


AU 27

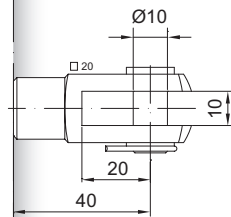
Standard strokes H (mm)
50, 80, 100, 150, 200, 250, 300, 350, 400

Standard length GL
 $L = 2 \times H + 100$
 $GL = L + L1 + L2$

AG 36



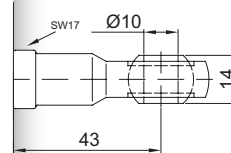
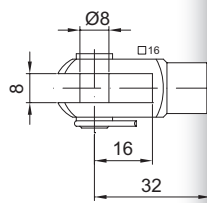
Standard including
Valve in base plate, Wiper ring, Grease chamber



GG 40

Extras
6 - Protection tube
7 - Floating piston
B3 - Sealing system
NT - Low-temperature design
HT - High-temperature design
RK - Friction element

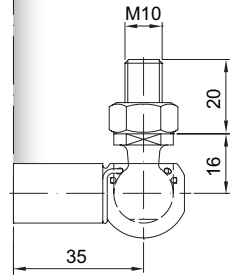
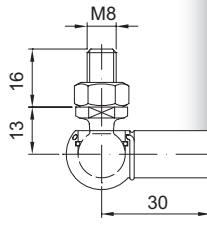
GG 32



AG 43

*Threaded end optional
M8, M10 or M14x1,5
More **endfittings** can be found here ▶
Matching brackets can be found here ▶

WG 30



WG 35