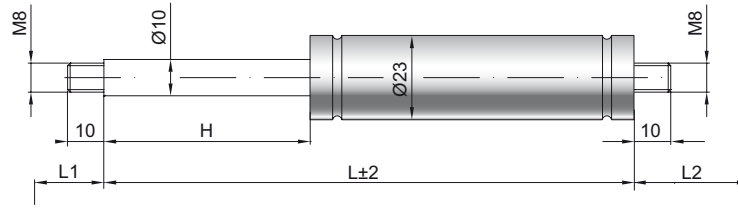


Gas spring G 10-23 V4

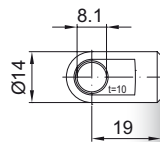
Extension force F1	100 - 1200 Newton
Progression	30 %
Piston rod	Ø 10 mm, W. 1.4404 / AISI 316 L
Cylinder	Ø 23 mm, W. 1.4571 / AISI 316 Ti
Threads	W. 1.4404 / AISI 316 L

GZ 10



GZ 10

AU 19



Details

Standard strokes H (mm)
50, 80, 100, 150, 200, 250, 300, 350, 400

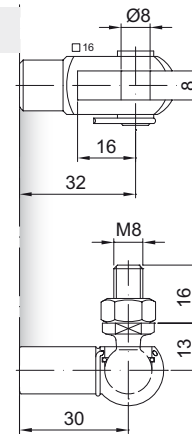
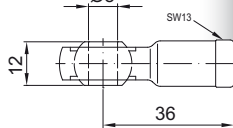
Standard length GL
 $L = 2 \times H + 70$
 $GL = L + L1 + L2$

Standard including
Valve in base plate, Wiper ring,
Grease chamber

- Extras**
- 6 - Protection tube
 - 7 - Floating piston
 - 8 - Locking device
 - B3 - Sealing system
 - NT - Low-temperature design
 - HT - High-temperature design
 - RK - Friction element

More **threads** can be found here [▶](#)
Matching brackets can be found here [▶](#)

AG 36



GG 32

WG 30