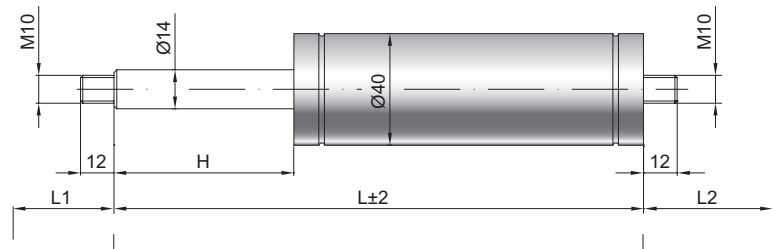


Gas spring G 14-40 V2

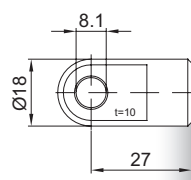
Extension force F1 200 - 2500 Newton
Progression 17 %
Piston rod Ø 14 mm, W. 1.4305 / AISI 303
Cylinder Ø 40 mm, W. 1.4301 / AISI 304
Endfittings W. 1.4305 / AISI 303

GZ 12

GZ 12



AU 27



Details

Standard strokes H (mm)
 50, 120, 150, 180, 200, 250, 270, 285,
 300, 350, 400, 500

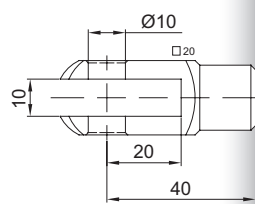
Standard length GL
 $L = 2 \times H + 100$
 $GL = L + L1 + L2$

Standard including
 Valve in base plate

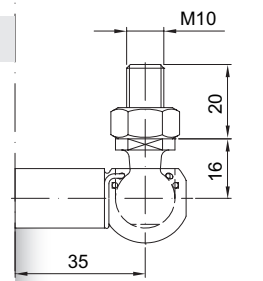
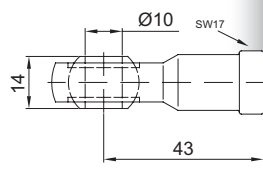
- Extras**
- 2 - Radial valve
 - 4 - Grease chamber
 - 6 - Protection tube
 - 7 - Floating piston

More **endfittings** can be found here [▶](#)

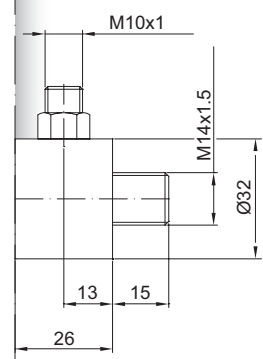
GA 40



AG 43



WG 35



QV GZ