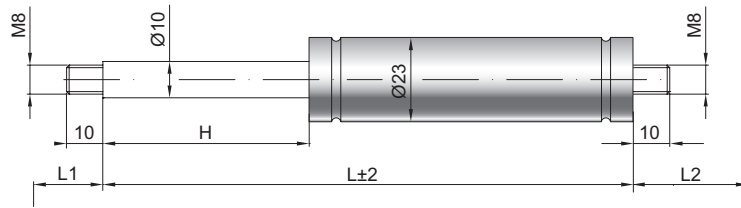


# Gas spring G 10-23 V2

**Extension force F1** 100 - 1200 Newton  
**Progression** 30 %  
**Piston rod** Ø 10 mm, W. 1.4305 / AISI 303  
**Cylinder** Ø 23 mm, W. 1.4301 / AISI 304  
**Endfittings** W. 1.4305 / AISI 303

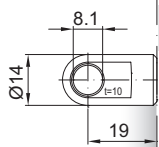
GZ 10

GZ 10



AU 19

GA 32



### Details

**Standard strokes H (mm)**  
 50, 60, 80, 100, 120, 140, 150, 160,  
 180, 200, 220, 250, 300, 350, 400

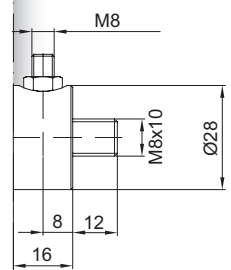
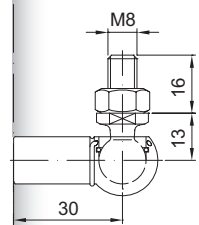
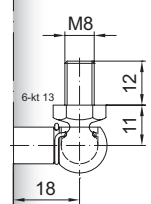
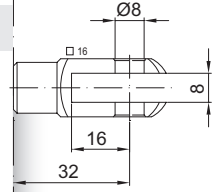
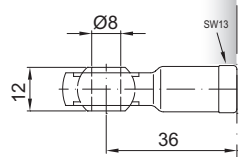
**Standard length GL**  
 $L = 2 \times H + 70$   
 $GL = L + L1 + L2$

**Standard including**  
 Valve in base plate

- Extras**
- 1 - Wiper ring
  - 2 - Radial valve
  - 4 - Grease chamber
  - 6 - Protection tube
  - 7 - Floating piston
  - 8 - Locking device
  - B3 - Sealing system
  - NT - Low-temperature design
  - HT - High-temperature design
  - RK - Friction element

More **endfittings** can be found here [▶](#)  
**Matching brackets** can be found here [▶](#) ...

AG 36



WG 18

until max. 800 N

WG 30

QV GZ