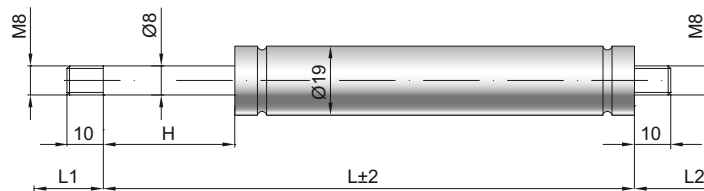


Gas spring G 08-19 V2

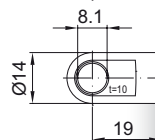
Extension force F1	50 - 700 Newton
Progression	30 %
Piston rod	Ø 8 mm, W. 1.4305 / AISI 303
Cylinder	Ø 19 mm, W. 1.4301 / AISI 304
Threads	W. 1.4305 / AISI 303

GZ 10



GZ 10

AU 19



Details

Standard strokes H (mm)

40, 50, 60, 80, 100, 120, 150, 160, 180, 200, 220, 250, 300

Standard length GL

$L = 2 \times H + 70$
 $GL = L + L1 + L2$

Standard including

Valve in base plate

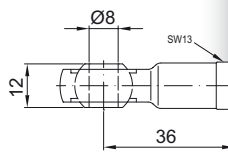
Extras

- 1 - Wiper ring
- 2 - Radial valve
- 4 - Grease chamber
- 6 - Protection tube
- 7 - Floating piston
- 8 - Locking device
- B3 - Sealing system
- NT - Low-temperature design
- HT - High-temperature design
- RK - Friction element

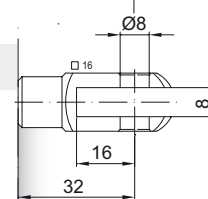
More **threads** can be found here ▶

Matching brackets can be found here ▶

AG 36

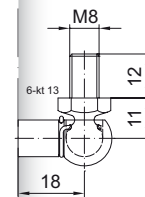


GA 32

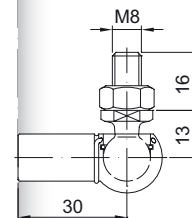


WG 18

until max. 800 N



WG 30



QV GZ

