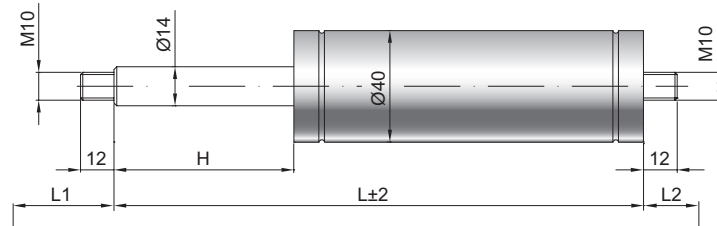


# Gas spring G 14-40

<b>Extension force F1</b>	150 - 2500 Newton
<b>Progression</b>	16 %
<b>Piston rod</b>	Ø 14 mm, stainless steel
<b>Cylinder</b>	Ø 40 mm, stainless steel, black spray coated
<b>Threads</b>	Steel zinc plated

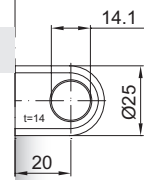
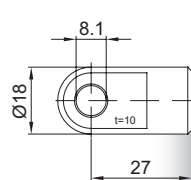
GZ 12

GZ 12



AU 27

AZ 20



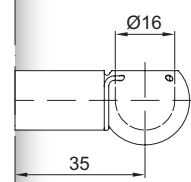
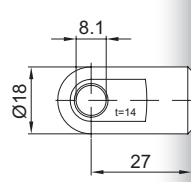
**Details**

**Standard strokes H (mm)**  
 50, 60, 80, 100, 120, 150, 160, 180,  
 200, 210, 220, 250, 300, 350, 400, 450,  
 500, 550, 600, 650, 700

*only possible on cylinder end*

AS 27

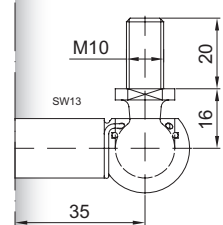
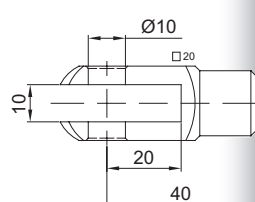
PF 35



**Standard length GL**  
 $L = 2 \times H + 100$   
 $GL = L + L1 + L2$

GA 40

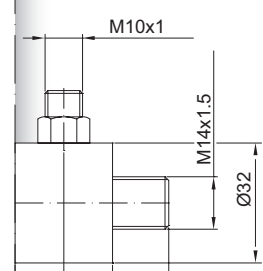
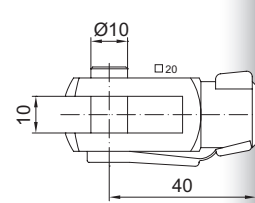
WG 35



- Extras**
- 1 - Wiper ring
  - 2 - Radial valve
  - 4 - Grease chamber
  - 5 - Valve
  - 6 - Protection tube
  - 7 - Floating piston
  - 8 - Locking device

GG 40

QV GZ



More **threads** can be found here [▶](#)

AG 43

