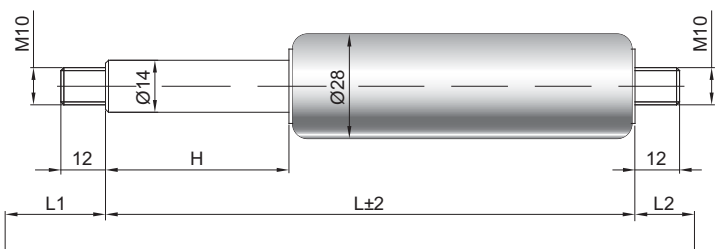


# Gas spring G 14-28

**Extension force F1** 150 - 2500 Newton  
**Progression** 40 %  
**Piston rod** Ø 14 mm, stainless steel  
**Cylinder** Ø 28 mm, stainless steel, black spray coated  
**Threads** Steel zinc plated

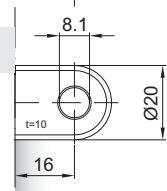
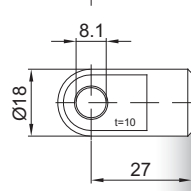
GZ 12

GZ 12



AU 27

AB 16



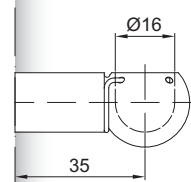
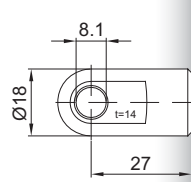
### Details

**Standard strokes H (mm)**  
 50, 60, 80, 100, 120, 150, 160, 180,  
 200, 210, 220, 250, 300, 350, 400, 450,  
 500, 550, 600, 650, 700

*only possible on cylinder end*

AS 27

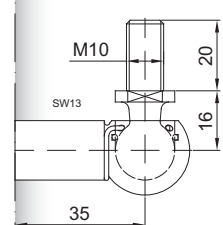
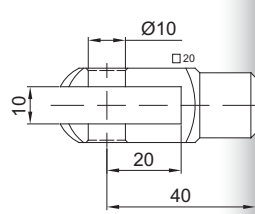
PF 35



**Standard length GL**  
 $L = 2 \times H + 107$   
 $GL = L + L1 + L2$

GA 40

WG 35



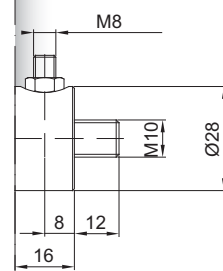
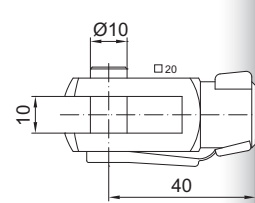
### Extras

- 1 - Wiper ring
- 2 - Radial valve
- 4 - Grease chamber
- 5 - Valve
- 6 - Protection tube
- 7 - Floating piston
- 8 - Locking device
- B3 - Sealing system
- NT - Low-temperature design
- HT - High-temperature design
- RK - Friction element

More **threads** can be found here [▶](#)

GG 40

QV GZ



AG 43

