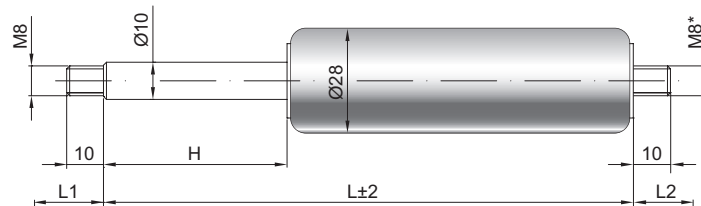


Gas spring G 10-28

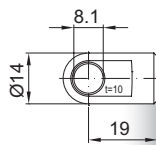
Extension force F1	100 - 1200 Newton
Progression	20 %
Piston rod	Ø 10 mm, stainless steel
Cylinder	Ø 28 mm, stainless steel, black spray coated
Threads	Steel zinc plated

GZ 10



GZ 10

AU 19



Details

Standard strokes H (mm)

40, 50, 60, 80, 85, 100, 120, 140, 150, 160, 180, 200, 220, 250, 270, 300, 325, 350, 400, 450, 500, 600, 700

Standard length GL

$L = 2 \times H + 70$
 $GL = L + L1 + L2$

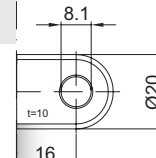
Extras

- 1 - Wiper ring
- 2 - Radial valve
- 4 - Grease chamber
- 5 - Valve
- 6 - Protection tube
- 7 - Floating piston
- 8 - Locking device
- B3 - Sealing system
- NT - Low-temperature design
- HT - High-temperature design
- RK - Friction element

*Threaded end optional M8 or M10

More **threads** can be found here ▶

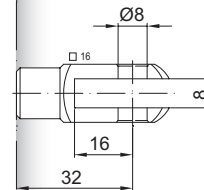
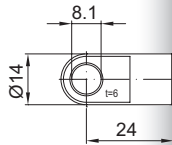
Matching brackets can be found here ▶



AB 16

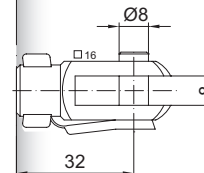
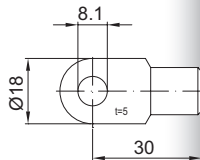
only possible on cylinder end

AS 24



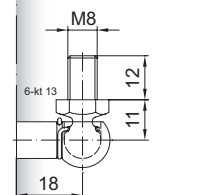
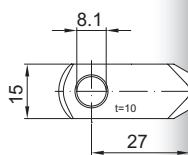
GA 32

AS 30



GG 32

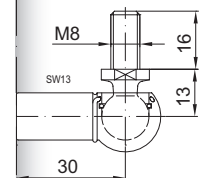
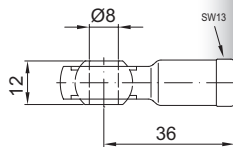
AR 27



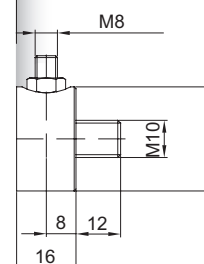
WG 18

until max. 800 N

AG 36



WG 30



QV GZ