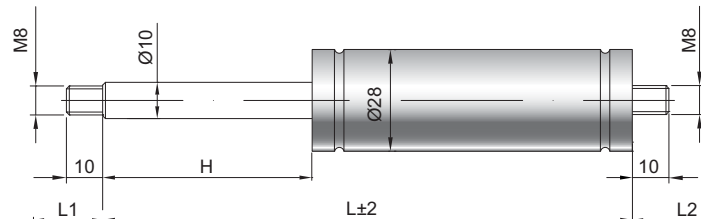


Ölbremse D 10-28

Dämpfkraft 120 - 1200 Newton
Kolbenstange Ø 10 mm, Stahl hartverchromt
Druckrohr Ø 28 mm, Stahl schwarz lackiert
Anschlüsse Stahl blau verzinkt

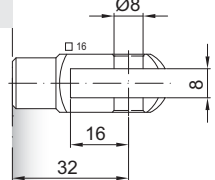
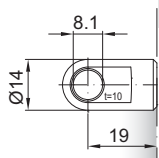
GZ 10

GZ 10



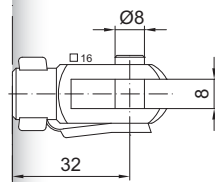
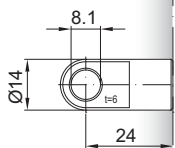
AU 19

GA 32



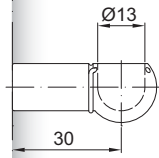
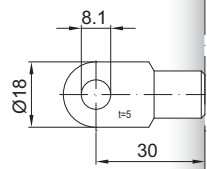
AS 24

GG 32



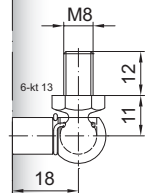
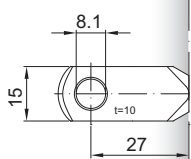
AS 30

PF 30



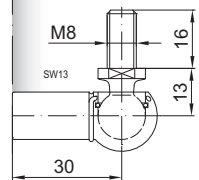
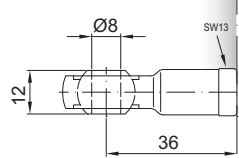
AR 27

WG 18



AG 36

WG 30



Details

Standardhöhe H (mm)
 40, 50, 60, 80, 85, 100, 120, 140, 150,
 160, 180, 200, 220, 250, 270, 300, 325,
 350, 400, 450, 510, 610, 710

Standardlänge GL
 $L = 2 \times H + 45$
 $GL = L + L1 + L2$

Extras
 6 - Schutzrohr
Dämpfung
 1 = Zugdämpfer
 2 = Druckdämpfer
 3 = beidseitig wirkender Dämpfer

Weitere **Anschlüsse** finden Sie hier ▶
 Passende **Beschläge** finden Sie hier ▶

bis max. 800 N